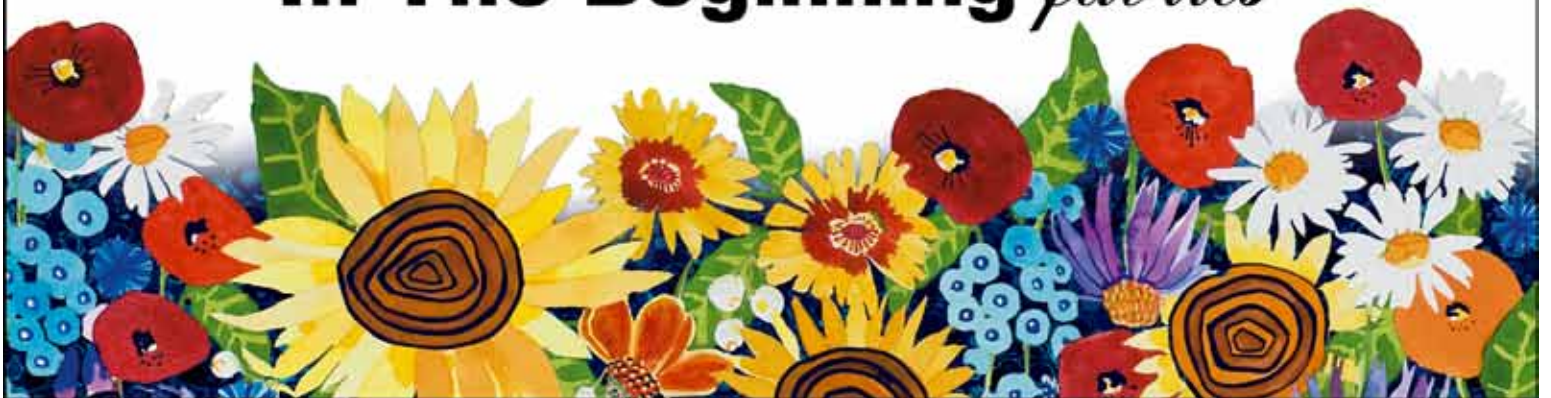


My Sunshine

by Kathy Deggendorfer



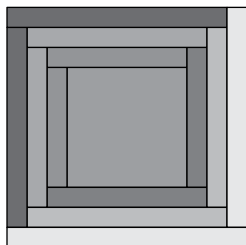
In The Beginning *fabrics*



FINISHED BLOCK SIZE: 12" x 12"

FINISHED QUILT SIZE: 88½" x 88½"

- A separate materials list is given for each of the two quilts.
- Yardages are based on 40" fabric width.



Log Cabin Block

Materials: Blue Quilt

- 1⅓ yds. Blue Large Floral (1KDA1) for blocks
- 1 yd. Blue Floral Tonal (4KDA1) for blocks
- ⅞ yd. Blue Daisies (3KDA1) for blocks
- 1 yd. Blue Stripe Tonal (7KDA1) for blocks
- ⅔ yd. Orange Stripe Tonal (7KDA2) for blocks
- 1¼ yds. Green Floral Tonal (4KDA3) for blocks
- 1½ yds. Green Stripe Tonal (7KDA3) for blocks
- 2 yds. Green Dots Tonal (6KDA1) for blocks and binding
- 2⅞ yds. Blue Floral Border Stripe (2KDA1) for border
- 8½ yds. for backing

Materials: Red Quilt

- 1⅓ yds. Red Large Floral (1KDA2) for blocks
- 1 yd. Red Floral Tonal (4KDA2) for blocks
- ⅞ yd. Red Daisies (3KDA2) for blocks
- 1 yd. Red Dot Tonal (6KDA2) for blocks
- ⅔ yd. Orange Stripe Tonal (7KDA2) for blocks
- 1¼ yds. Green Floral Tonal (4KDA3) for blocks
- 1½ yds. Green Stripe Tonal (7KDA3) for blocks
- 2 yds. Green Dots Tonal (6KDA1) for blocks and binding
- 2⅞ yds. Red Floral Border Stripe (2KDA2) for border
- 8½ yds. for backing

Cutting

One set of cutting instructions is given, and can be used for either of the quilts. Fabrics are cut in order given in Materials lists. Cut strips across width of fabric, unless otherwise instructed.

From Large Floral, cut:

- 36 squares, 6½" x 6½", for center of blocks

From Floral Tonal, cut:

- 18 strips, 1½" x 40", for blocks

From Daisies, cut:

- 17 strips, 1½" x 40", for blocks

From Blue Stripe Tonal (Blue Quilt) –OR– Red Dot Tonal (Red Quilt), cut:

- 19 strips, 1½" x 40", for blocks

From Orange Stripe Tonal, cut:

- 12 strips, 1½" x 40", for blocks

From Green Floral Tonal, cut:

- 23 strips, 1½" x 40", for blocks

From Green Stripe Tonal, cut:

- 22 strips, 1½" x 40", for blocks

From Green Dots Tonal, cut:

- 10 strips, 2½" x 40", for double-fold binding
- 23 strips, 1½" x 40", for blocks

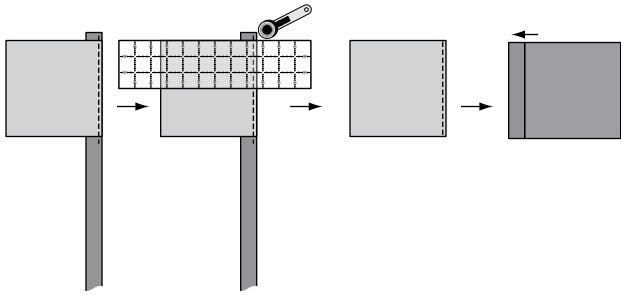
From Floral Border Stripe, selectively cut:

- 4 strips, 8½" x length of fabric, for border (*Note: Selectively cut each border strip so that the design is the same in each strip, as shown in the photo. This will make the design match at the mitered corners.*)

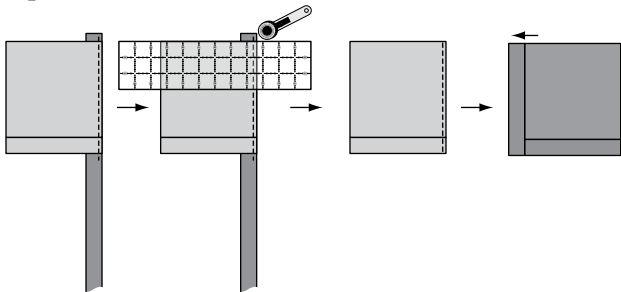
Block Assembly

All seams $\frac{1}{4}$ ". Press seams in direction of arrows unless otherwise instructed. Assembly instructions are the same for both quilts. Before starting to sew, divide $1\frac{1}{2}$ "-wide strips into two stacks: one stack with green strips, and one stack with blue and orange strips (Blue Quilt) – OR – red and orange strips (Red Quilt). Refer often to photographs for fabric placement.

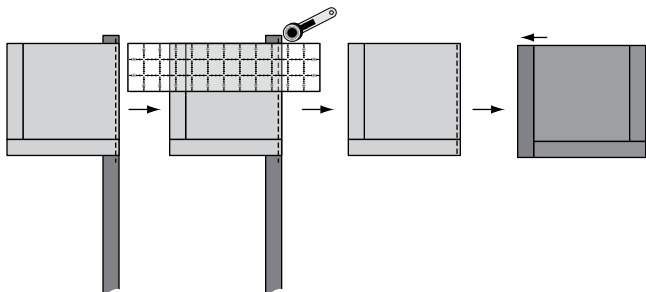
1. With raw edges even and right sides together, position a Large Floral $6\frac{1}{2}$ " square at one end of an assorted-print $1\frac{1}{2}$ " x 40" strip (use a blue or orange strip if making the Blue Quilt – OR – a red or orange strip if making the Red Quilt). Stitch square to strip as shown, starting and stopping your stitching about $\frac{1}{8}$ " before and after the square. Using a ruler and rotary cutter, trim the strip edges even with the square. Press seams toward strip.



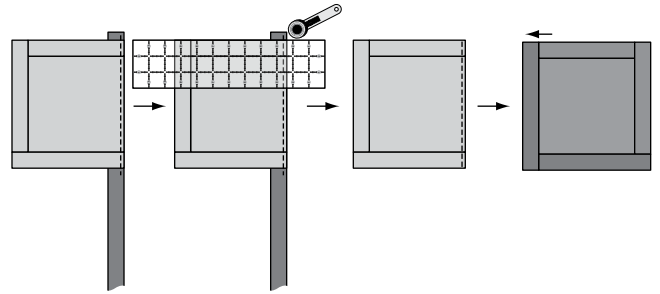
2. Rotate the unit made in Step 1 as shown and, with right sides together, sew it to the same strip. Trim strip edges even with the square. Press seams toward strip.



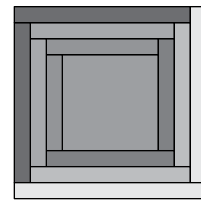
3. Rotate the unit again, and sew it to a green assorted-print $1\frac{1}{2}$ " x 40" strip. Trim and press as on previous steps.



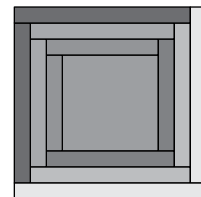
4. Rotate the unit again, and sew it to the same strip used in Step 3. Trim and press.



5. Repeat Steps 3-4 until you have a total of 3 logs on each side of your center square as shown. (Again, please refer to the photos for fabric placement.) Continue to press seams away from center of block.



6. Repeat Steps 1-5 to make a total of 36 blocks.



Make 36.

7. Sew the blocks together in rows as shown in the Quilt Assembly Diagram on back page; press for opposing seams from row to row. Sew the rows together. Press seams in one direction.

Mitered Borders

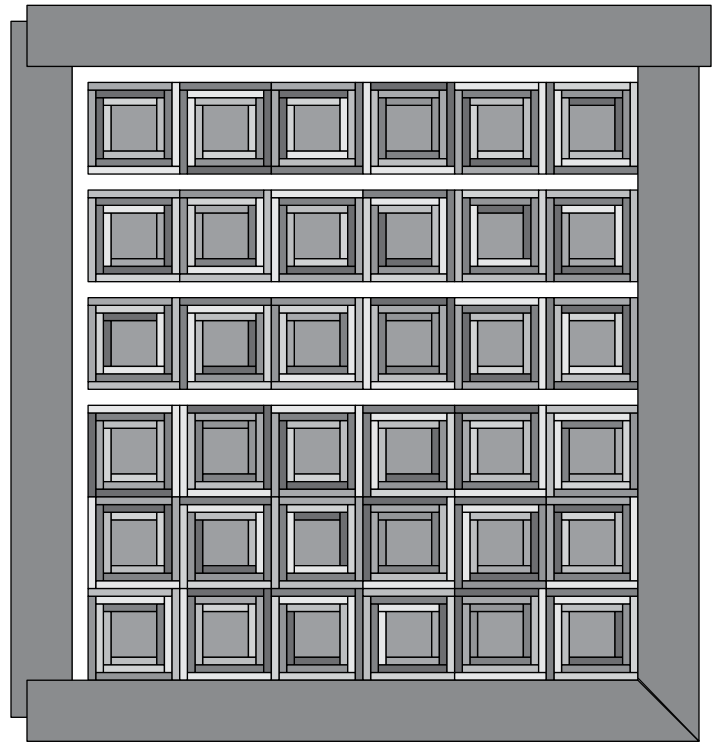
With right sides together (and making sure that the design is oriented correctly, with the tonal portion of the design at the inner border), pin border strips to sides of quilt top (border strips should extend approximately equally beyond top and bottom of quilt; it's easiest if you start pinning at the center of border and work outward). Sew border strips to sides of quilt top, beginning and ending $\frac{1}{4}$ " from raw edges of quilt. Backstitch to secure. Press seams toward borders. Now pin and sew the top and bottom border to the quilt top; start and stop

your seams at the point where the side borders join the quilt ($\frac{1}{4}$ " from edges). Backstitch to secure. Press seams toward borders. Miter corners using your favorite technique.

Finishing

Layer quilt top, batting, and backing. Quilt as desired. Bind. Don't forget to sign and date your finished quilt.

In The Beginning Fabrics ©2011
8057 16th Ave. NE • Seattle, WA 98115
www.inthebeginningfabrics.com



Quilt Assembly Diagram

